

Sample Information

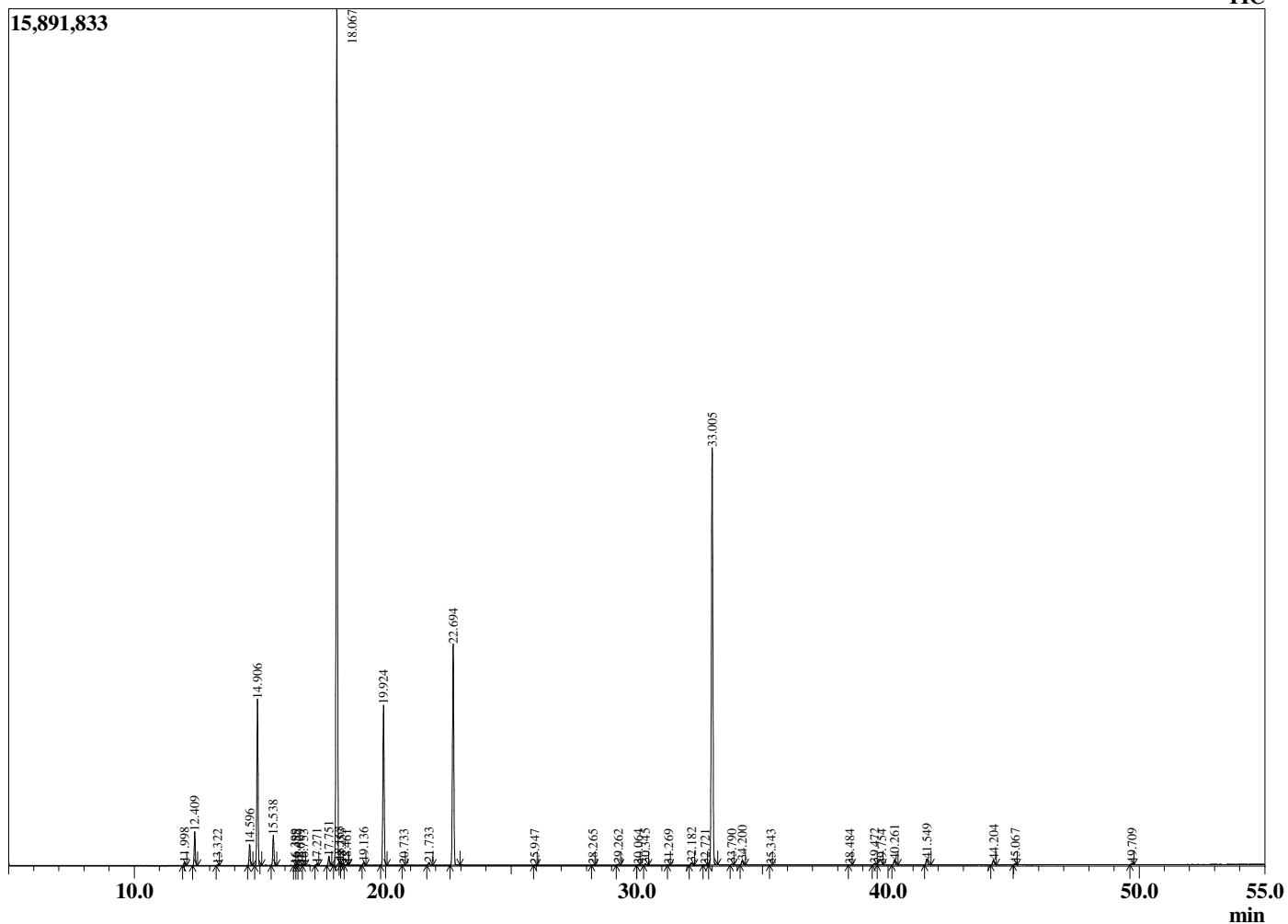
Analyzed by : Dr. Robert S. Pappas
 Analyzed : 2/15/2018 8:34:57 PM
 Sample Type : Essential Oil
 Sample Name : Bergamot - Art Naturals
 Sample ID : EOU180215C
 Injection Volume : 0.10
 Instrument ID : GC-3



Peak Report TIC

R.Time	Name	Area%
11.998	alpha-Thujene	0.13
12.409	alpha-Pinene	1.40
13.322	Camphene	0.03
14.596	Sabinene	0.95
14.906	beta-Pinene	7.61
15.538	Myrcene	1.36
16.399	Octanal	0.04
16.455	Pseudolimonene	0.03
16.609	alpha-Phellandrene	0.03
16.753	delta-3-Carene	0.02
17.271	alpha-Terpinene	0.08
17.751	para-Cymene	0.44
18.067	Limonene	42.09
18.163	beta-Phellandrene	0.02
18.253	1,8-cineole	0.05
18.461	cis-beta-Ocimene	0.05
19.136	trans-beta-Ocimene	0.14
19.924	gamma-Terpinene	7.92
20.733	cis-Linalool oxide (furanoid)	0.03
21.733	Terpinolene	0.16
22.694	Linalool	11.65
25.947	Camphor	0.02
28.265	Terpinen-4-ol	0.01
29.262	alpha-Terpineol	0.05
30.064	Decanal	0.02
30.345	Octyl acetate	0.06
31.269	Nerol	0.01
32.182	Neral	0.15
32.721	???	0.03
33.005	Linalyl acetate	23.91
33.790	???	0.04
34.200	Geranial	0.25
35.343	Bornyl acetate	0.01
38.484	Linalyl propionate	0.02
39.472	alpha-Terpinyl acetate	0.09
39.754	Unidentified	0.03
40.261	Neryl acetate	0.30
41.549	Geranyl acetate	0.36
44.204	beta-Caryophyllene	0.29
45.067	trans-alpha-Bergamotene	0.06
49.709	beta-Bisabolene	0.06
		100.00

Chromatogram Bergamot - Art Naturals



Comments: